



# Colombo Dockyard PLC

SHIPREPAIRERS, SHIPBUILDERS, HEAVY & OFFSHORE ENGINEERS  
PORT OF COLOMBO, COLOMBO, SRI LANKA



*“...an Odyssey of Excellence.”*

## **Presentation to** **5th Asian Shipbuilding Experts' Forum**

*by*  
**Y. Kijima, Director**  
**Colombo Dockyard PLC**  
**Sri Lanka**

# Operating Business Sectors



**SHIPREPAIRS**



**SHIPBUILDING**



**OFFSHORE ENGINEERING**



**HEAVY ENGINEERING**



# Our Facility - *An Aerial View*



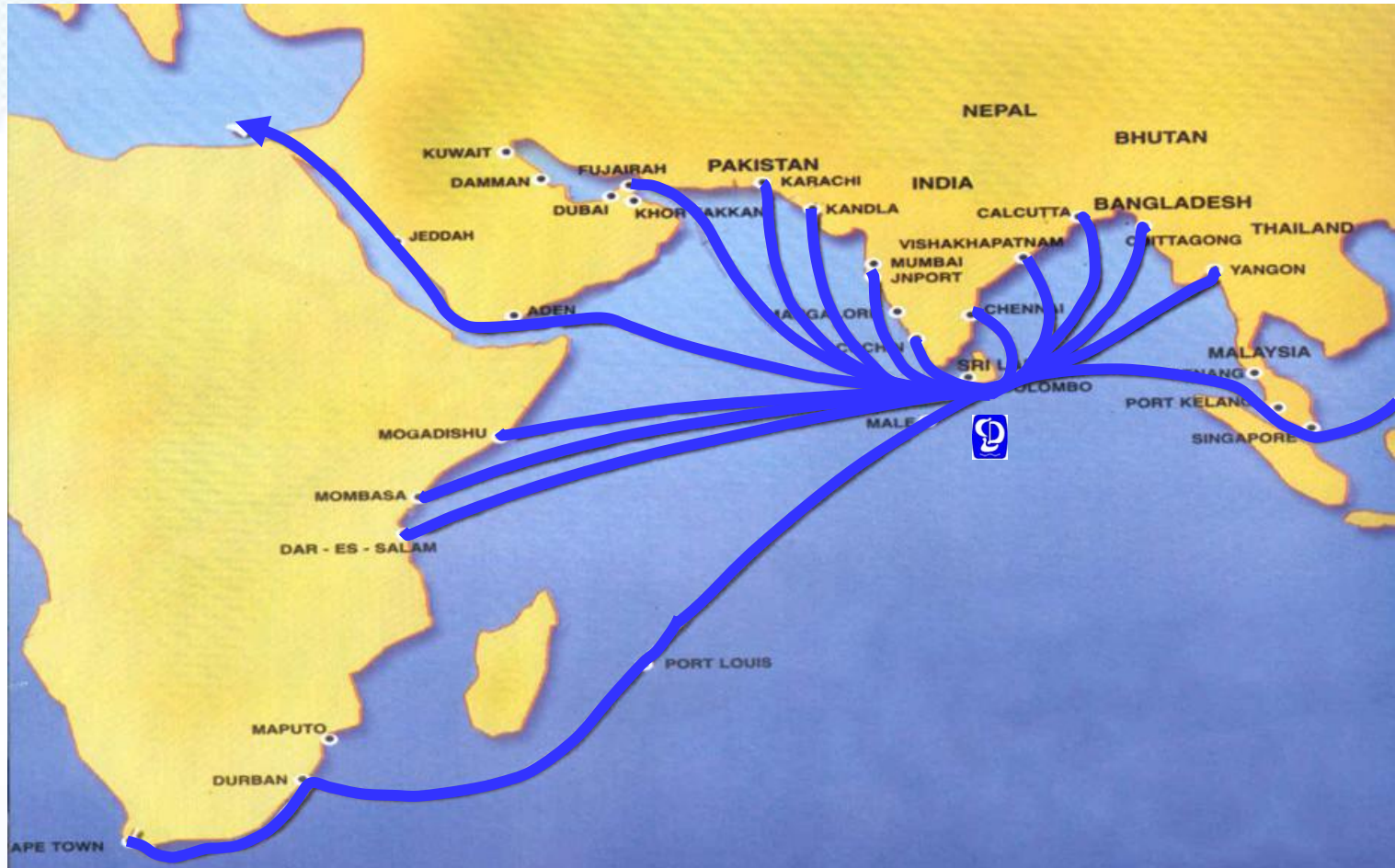
**Colombo Dockyard PLC**

*...an Odyssey of Excellence.*

*Frontiers of Sri Lankan Industrialization...*



# Close Proximity To All Sea Lanes



**Colombo Dockyard PLC**

...an Odyssey of Excellence.

Frontiers of Sri Lankan Industrialization...





# Significant Corporate Milestones



- 1974** Company was formed as a Limited Liability Company under the auspices of the Government of Sri Lanka with Dry Docks 1, 2 & 3
- 1988** Commissioning of the New Dry Dock No. 4 with 125,000 DWT capacity
- 1993** **Collaboration with Onomichi Dockyard Co. Ltd., of Japan**
- 2004** Ventured into Higher End Markets - Offshore Engineering
- 2005** Internationalized the Shipbuilding Business
- 2007** Major Yard Expansion Projects commenced with an initial investment of Rs. 380 m and continued to invest up to Rs. 3.0 billion to date
- 2008-11** Shifted to the new Head Office building with 5 floors, Automation of Steel Cutting to Plasma Cutting, PSPC Workshop, Commissioning of Kelani River Yard with a shot blasting and priming facility
- CDPLC now:** Issued Share Capital Rs. 684,370,712 with a Market Capitalization of Rs. 19.5 billion

## Current Share Holding:

Onomichi Dockyard - Japan	51+%
State owned entities	30 %
Public Shareholders	19+%

Annual Average Turnover of around US\$ 130 million



**Colombo Dockyard PLC**

*...an Odyssey of Excellence.*

*Frontiers of Sri Lankan Industrialization...*



# OPERATES IN JOINT COLLABORATION WITH ONOMICHI DOCKYARD CO.LTD. JAPAN



## A GLIMPSE OF THE ONOMICHI SHIP YARD



**Colombo Dockyard PLC**  
...an Odyssey of Excellence.

Frontiers of Sri Lankan Industrialization...





*“...an Odyssey of Excellence.”*

# Noteworthy Achievements in Shipbuilding



# ULTRA FAST PATROL CRAFT



Length : 24.40 m      Speed : 53 Knots  
Breadth : 5.88 m      Endurance : 500 nm  
Depth : 3.00 m      Classification : LR + 100A1 + LMC  
Design : Colombo Dockyard, Sri Lanka

**Over 40 Nos.  
Delivered in 4  
different Series**



*Owner : Sri Lanka Navy*



**Colombo Dockyard PLC**

*...an Odyssey of Excellence.*

*Frontiers of Sri Lankan Industrialization...*



# 35 M FISHERIES PROTECTION CRAFT



Length : 35.30 m      Speed : 28 Knots  
Breadth : 7.00 m      Endurance : 1000 nm  
Depth : 3.60 m      Classification : LR + 100A1 SSC Patrol Mono G2 LMC  
Design : Colombo Dockyard, Sri Lanka



**Colombo Dockyard PLC**

*...an Odyssey of Excellence.*

*Frontiers of Sri Lankan Industrialization...*



# 40 M FISHERIES PROTECTION VESSEL



Length : 42.20 m      Speed : 30 Knots  
Breadth : 7.21 m      Endurance : 1500 nm  
Depth : 3.53 m      Classification : LR + 100A1 SSC Patrol Mono G2 LMC  
Design : Colombo Dockyard, Sri Lanka



**Colombo Dockyard PLC**

*...an Odyssey of Excellence.*

*Frontiers of Sri Lankan Industrialization...*



# Coastal Surveillance Vessel



Length : 24.30 m Speed : 40 Knots

Breadth : 5.70 m Endurance: 600 nm

Depth : 3.00 m Classification : LR + 100A1 + LMC

Design : Colombo Dockyard, Sri Lanka



Owner : Maldives National Defence Force, Republic of Maldives



**Colombo Dockyard PLC**

...an Odyssey of Excellence.

Frontiers of Sri Lankan Industrialization...



# FIRE FIGHTING/ PATROL VESSEL

Length : 15.90 m Speed : 40 Knots

Breadth : 3.80 m Endurance: 200 nm

Depth : 2.10 m Draught : 0.95 m

Design : Colombo Dockyard, Sri Lanka



**Attends fast to fire incidents in  
Vessels and Atolls**

Owner : Maldives National Defence Force, Republic of Maldives



*Colombo Dockyard PLC*

*...an Odyssey of Excellence.*

*Frontiers of Sri Lankan Industrialization...*



# FAST LANDING CRAFT



Length : 20.90 m Speed : 20 Knots

Breadth : 5.00 m Endurance: 100 nm

Depth : 2.00 m Classification : LR + 100A1 + LMC

Design : Colombo Dockyard, Sri Lanka



**Ideal for Armoured Vehicle & Troop  
deployment**

Owner : Maldives National Defence Force, Republic of Maldives



*Colombo Dockyard PLC*  
...an Odyssey of Excellence.

Frontiers of Sri Lankan Industrialization...



# 33.5 M CREW BOATS

Length : 33.50 m      Speed : 18 Knots  
Breadth : 6.80 m      Endurance : 750 nm  
Depth : 3.70 m      Classification : ABS + A1 HSC + AMS  
Design : Robert Allan, Canada fully customized to ARAMCO requirements



Owner : ZAMIL O & M - THE KINGDOM OF SAUDI ARABIA  
Operating for SAUDI ARAMCO



**Colombo Dockyard PLC**

...an Odyssey of Excellence.

Frontiers of Sri Lankan Industrialization...



# 30 M CREW BOATS

Length : 30.00 m      Speed : 20 Knots  
Breadth : 7.60 m      Endurance : 750 nm  
Depth : 3.20 m      Classification : ABS + A1 HSC + AMS  
Design : Robert Allan, Canada fully customized to SHELL requirements



Owner : LAMNALCO LIMITED, REPUBLIC OF CYPRUS/ DUBAI  
Operating for SHELL INTERNATIONAL



**Colombo Dockyard PLC**

...an Odyssey of Excellence.

Frontiers of Sri Lankan Industrialization...



# 58 TON BOLLARD PULL TUG BOAT



Length : 37.00 m      Speed : 13 Knots  
Breadth : 12.00 m      Bollard Pull : 58 Ton  
Depth : 5.00 m      Classification : LR + 100A1 + LMC  
Design : Conan Wu, Singapore customized by CDL to SEPA Requirements



**Colombo Dockyard PLC**  
...an Odyssey of Excellence.

Frontiers of Sri Lankan Industrialization...



# 80 TBP ANCHOR HANDLING TUG SUPPLY VESSEL

Length : 63.40 m      Speed : 13.9 Knots  
Breadth : 15.00 m      Deadweight : 2000 DWT  
Depth : 6.00 m      Classification : DNV Class  
Design : MOSS MARITIME Bollard Pull: in excess of 90 T



**4 Nos. Delivered in  
2008 – 2009  
2 INDIAN AND  
2 SINGAPOREAN FLAG**



**Colombo Dockyard PLC**  
...an Odyssey of Excellence.

Frontiers of Sri Lankan Industrialization...



# 250 PASSENGER CUM 100 T CARGO VESSEL

Length : 89.00 m      Speed : 15 Knots  
Breadth : 15.50 m      Deadweight : 725 Tons  
Depth : 6.30 m      Classification : DUAL CLASS - LR/IR  
Design : Larsen & Toubro Limited of India

**1<sup>st</sup> Delivered in January 2010**  
**2<sup>nd</sup> Delivered in October 2010**



**Colombo Dockyard PLC**

*...an Odyssey of Excellence.*

*Frontiers of Sri Lankan Industrialization...*



# 78 M MULTIPURPOSE PLATFORM SUPPLY VESSEL



Length : 78.00 m      Speed : 13.8 Knots  
Breadth : 17.00 m      Deadweight : 3000 Tons  
Depth : 8.00 m      Classification : LR +100 A 1, OSV, LPT, +LMC, UMS, DP (AA), NAV1  
Design : Seatech Solutions Intl Singapore  
Crew : 50 persons



**1<sup>st</sup> Delivered in April 2010**

**2<sup>nd</sup> Delivered in Aug 2010**

**3<sup>rd</sup> Delivered in Dec 2010**

**4<sup>th</sup> Delivered in Mar 2011**



**Colombo Dockyard PLC**

*...an Odyssey of Excellence.*

*Frontiers of Sri Lankan Industrialization...*



# 140 T ANCHOR HANDLING TUG

Length : 67.40 m Speed : 14.5 Knots  
Breadth : 16.00 m Deadweight: 2350 Tons  
Depth : 7.50 m Classification : DNV + 1A1, Tug/ Supply Vessel Basic, SF, E0, HL(2.8), DK(+), Fire Fighter I, Dynpos AUTR  
Design : Moss 525 Norway  
Crew : 40 persons



**1<sup>st</sup> delivered in October 2011**

**2<sup>nd</sup> scheduled to be delivered December 2011**



**Colombo Dockyard PLC**  
...an Odyssey of Excellence.

Frontiers of Sri Lankan Industrialization...



# Colombo Dockyard's Overseas Shipbuilding Projects:

## Repositioning CDPLC in the International Market



### In operation:

- 33.5 m Crew Boats for ZAMIL **Saudi Arabia** -2Nos (2004)
- 30 m Crew Boats for LAMNALCO **UAE** - 2 Nos (2004)
- 58 T BP Tug Boats for ATCO **Saudi Arabia** -3 Nos (2006)
- 35M & 40M Fisheries Protection Craft for Maldives National Defence Force (MNDF) **Republic of Maldives** (2007)
- 80 T BP Anchor Handling Tug Supply Vessels for Great Ship India Ltd **India** - 4 Nos (2008/2009)
- 250 Passenger cum 100 T Cargo Vessels for **Govt. of India** -2 Nos (2010)
- 78 m Multipurpose Platform Supply Vessels for **Singapore** – 4 Nos. (2010/2011)

### Currently at Yard:

- 140 T BP Anchor Handling Tug Supply Vessels for Eagle High Ltd and True Wisdom Ltd of **Singapore** – 2 Nos (2011) – 1 Delivered and 1 under construction
- 78 m Multipurpose Platform Supply Vessels for Greatship Global Offshore Services Pvt Ltd **Singapore** – 3 Nos (2012) – Under Construction
- 78 m Multipurpose Platform Supply Vessels for Un of **Singapore** – 4 Nos (2013/ 2014) – Construction to commence shortly
- 400 Passenger cum 250 T Cargo Vessels for **Govt. of India** – 2 Nos (2013) – At design Stage





*“...an Odyssey of Excellence.”*

# **Noteworthy Achievements in Ship Repairs**

# COLOMBO DOCKYARD : Ship Repairs at a Glance



- Total 200 vessels repaired annually
  - 100 Vessels in dry-dock
  - 100 Vessels at alongside repair berth.
- Repair Types – From very Basic to Complex scope.
  - Routine repairs, Collision Damage repairs, Conversion and retrofit repairs.
- Wide spectrum of vessel types accommodated for repairs
  - Tankers, Bulk Carriers, General Cargo, Container & Cement Carriers, Dredgers, Tugs, Offshore Support Vessels and Vehicle Carriers.
- Frequent callers : India, Middle East, Europe, Far East, Japan and Maldives.
- Tankers : 10 to 12 Tankers (80,000 DWT +) accommodated annually



# MV. JAG VIKAS – OWNED BY GESCO, MUMBAI

## COLLISION DAMAGE REPAIRS - 100 TONS OF STEEL RENEWED



**Colombo Dockyard PLC**

...an Odyssey of Excellence.

Frontiers of Sri Lankan Industrialization...



# SHIPPING CORPORATION OF INDIA – FREQUENT CALLER TO CDPLC



**Colombo Dockyard PLC**

...an Odyssey of Excellence.

Frontiers of Sri Lankan Industrialization...



# REPAIRS TO LPG CARRIERS

## NORGAS – NORWAY, SCI - INDIA



LPG & Petrochemical Gas Transportation – World Wide  
A Skaugen Company – [www.skaugen.com](http://www.skaugen.com)

### LPG. NORGAS CHIEF



### LPG. ANAPURNA



**Colombo Dockyard PLC**

...an Odyssey of Excellence.

Frontiers of Sri Lankan Industrialization...



# REPAIRS ON OFFSHORE SUPPORT VESSELS



**OSV. BOURBON THERA/BOURBON  
OFFSHORE, FRANCE**



**OSV. S B S NIMBUS/  
SBS MARINE, UK**



**OSV. WESTERN TIDE/TIDEWATER  
INTERNATIONAL, USA**



**OSV. CFM. JUVALE/SCI/ONGC,  
INDIA**



**Colombo Dockyard PLC**

...an Odyssey of Excellence.

Frontiers of Sri Lankan Industrialization...



# DREDGER REPAIRS TO INTERNATIONAL PLAYERS

## DREDGING INTERNATIONAL, VAN OORD, DCI



**Dredging  
International**



**Van Oord**



**Colombo Dockyard PLC**  
...an Odyssey of Excellence.

Frontiers of Sri Lankan Industrialization...

# DREDGER REPAIRS TO INTERNATIONAL PLAYERS

## HYUNDAI ENGINEERING & CONSTRUCTION CO.



*Colombo Dockyard PLC*  
...an Odyssey of Excellence.

*Frontiers of Sri Lankan Industrialization...*



# WHY LOOK AT COLOMBO ?



1. Strategic location of Colombo at the intersection of major sea routes.
2. Successful joint venture with Onomichi Dockyard, Japan since 1993.
3. Quality workmanship and skilled work force. ISO 9001: 2008 accredited Quality Management System by LRQA.
4. Safety conscious work force & Top Management committed to safety.
5. Faster turn around time and minimal diversion.
6. Competitive rates and no surprises.
7. Duty Free spares. Fast customs clearing, within 4-6 hrs. in the yard.
8. Urgent spares from speedy network: Daily flight connections from all major points.
9. All major Class Societies represented in Colombo. (LR, ABS,NKK,BV,DNV,IRS,GL).
10. Present in Colombo: MAN, Wartsila, etc.
11. All major paint suppliers are present in Colombo. (*Sigma, Hemple, International, Jotun, CMP, etc.*).
12. Ranked amongst the best travel destinations by NY Times in 2010!



**Colombo Dockyard PLC**

*...an Odyssey of Excellence.*

*Frontiers of Sri Lankan Industrialization...*





# Noteworthy Achievements in Offshore Engineering



*Colombo Dockyard PLC*

*...an Odyssey of Excellence.*

*Frontiers of Sri Lankan Industrialization...*



# DAMAGE REPAIRS TO OFFSHORE JACKUP DRILLING RIG ABAN-II



**DAMAGE REPAIRS TO HER SUBMERGED  
MAT ATTENDED WHILE AFLOAT**



**Colombo Dockyard PLC**  
...an Odyssey of Excellence.

Frontiers of Sri Lankan Industrialization...



# OFFSHORE ENGINEERING

## RETROFIT REPAIRS TO FLOATING DOCK NAVY -1

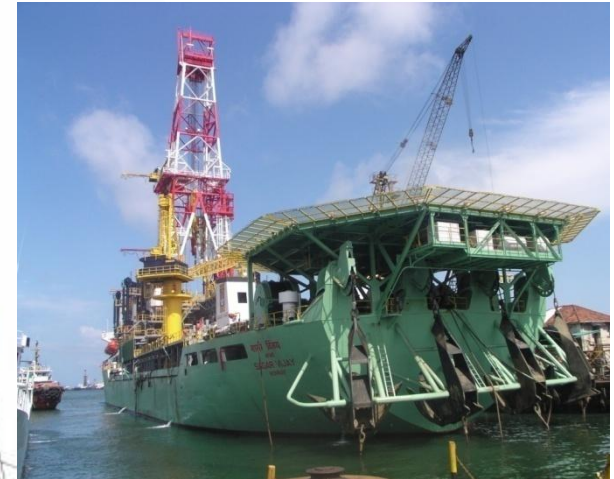


*Colombo Dockyard PLC*  
...an Odyssey of Excellence.

*Frontiers of Sri Lankan Industrialization...*



# MODU SAGAR VIJAY MAJOR LAY UP & DRYDOCK REPAIRS



*Colombo Dockyard PLC*

*...an Odyssey of Excellence.*

*Frontiers of Sri Lankan Industrialization...*



# OFFSHORE ENGINEERING

## RETROFIT REPAIRS TO ORV. SAGAR KANYA



**Colombo Dockyard PLC**

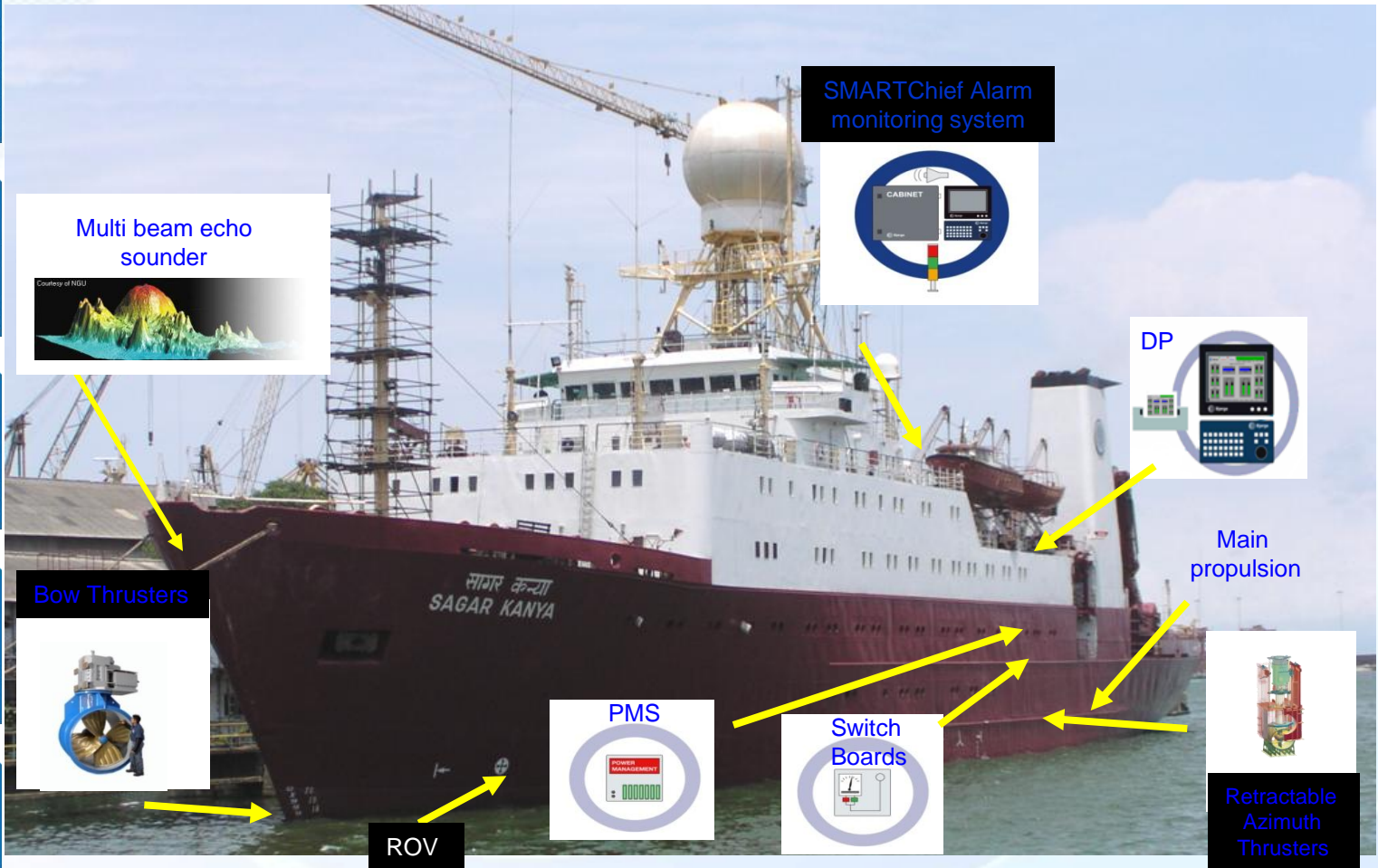
*...an Odyssey of Excellence.*

*Frontiers of Sri Lankan Industrialization...*



# OFFSHORE ENGINEERING

## ORV. SAGAR KANYA - SUMMARY OF REPAIRS



**Colombo Dockyard PLC**

...an Odyssey of Excellence.

Frontiers of Sri Lankan Industrialization...





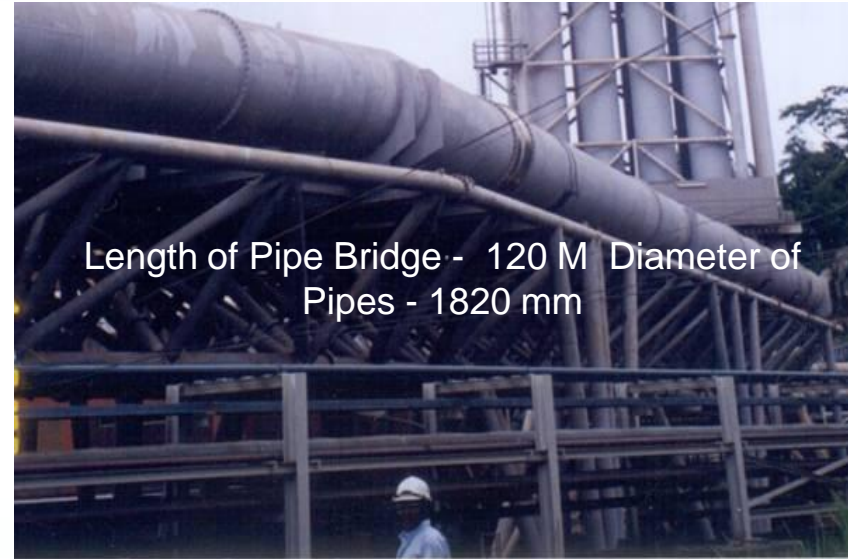
*“...an Odyssey of Excellence.”*

# **Noteworthy Achievements in Heavy Engineering**

# 40 MW Diesel Power Plant Extension Project Sapugaskanda



60 M High Multiflute  
Chimney



Length of Pipe Bridge - 120 M Diameter of  
Pipes - 1820 mm



Power House 175 fts  
length, 140 fts width  
& 50 fts height



**Colombo Dockyard PLC**

...an Odyssey of Excellence.

Frontiers of Sri Lankan Industrialization...



# 4 Nos. 4000m<sup>3</sup> LPG Spheres for Shell Terminal Lanka



**Colombo Dockyard PLC**

*...an Odyssey of Excellence.*

*Frontiers of Sri Lankan Industrialization...*



# Our specialty ... Even with the product diversification, We cater for international markets



## *Phase 1*

*Design and Construction of Fuel Oil Storage Tanks at Thilafushi Island in Republic of Maldives; two numbers of 3000 m<sup>3</sup> and two numbers of 9000 m<sup>3</sup> Tanks*



## *Phase 2*

*Design and Construction of Fuel Oil Storage Tanks at Thilafushi Island in Republic of Maldives; two numbers of 1000 m<sup>3</sup> and two numbers of 6000 m<sup>3</sup> Tanks*



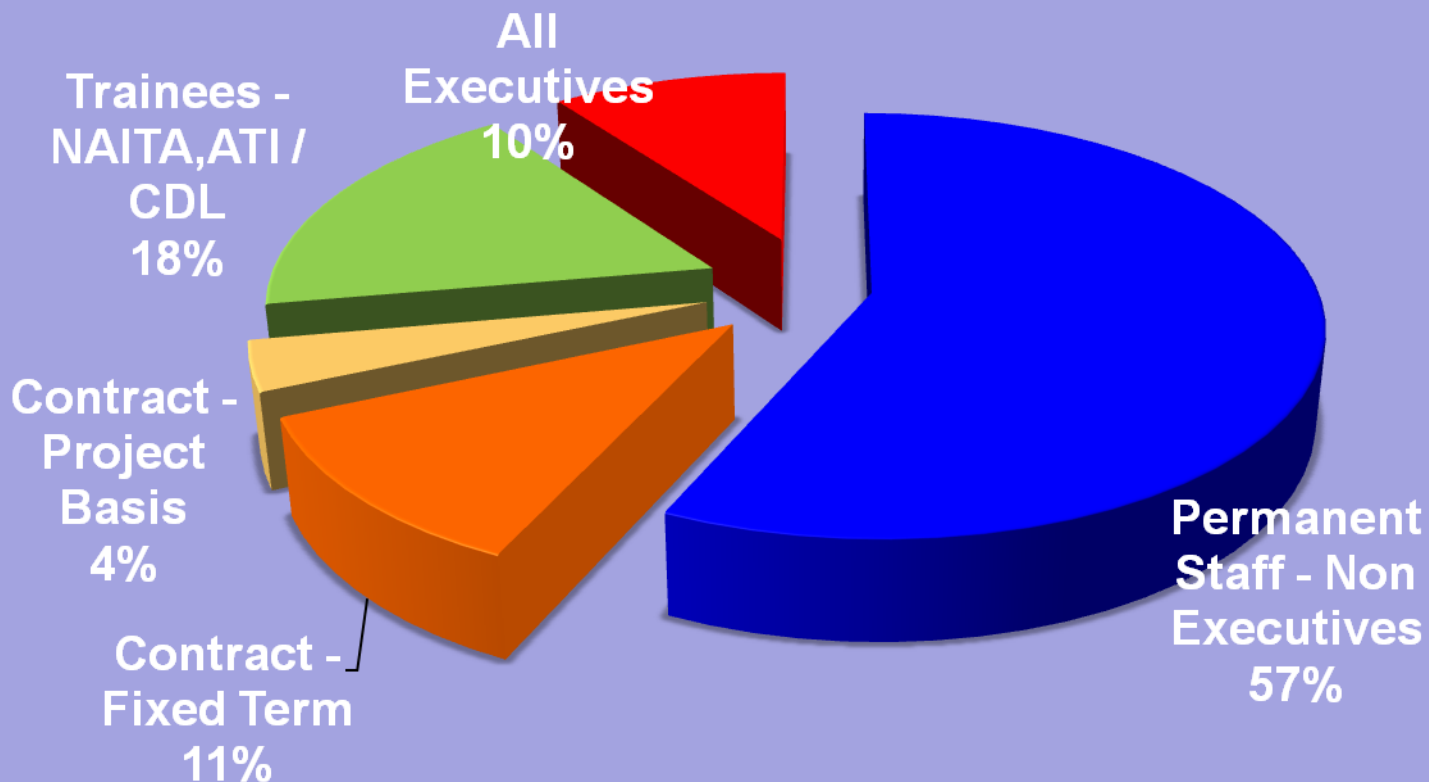
**Colombo Dockyard PLC**

*...an Odyssey of Excellence.*

*Frontiers of Sri Lankan Industrialization...*



# Human Resources Development



## WORKFORCE AS AT PRESENT

Permanent Staff	: 1319
Sub Contract	: 1368
Trainees	: 394



**Colombo Dockyard PLC**

...an Odyssey of Excellence.

Frontiers of Sri Lankan Industrialization...



# National Recognition for our Excellence in Business



**Colombo Dockyard PLC**

*...an Odyssey of Excellence.*

*Frontiers of Sri Lankan Industrialization...*



# Colombo Dockyard - Asia's 200 Best Under A Billion



<u>Name</u>	<u>Country</u>	<u>Sales (US \$mil)</u>	<u>Net Income (US \$mil)</u>	<u>Market Value (US \$mil)</u>
-------------	----------------	-------------------------	------------------------------	--------------------------------

<u>Colombo Dockyard</u>	Sri Lanka	<b>US\$ 118m</b>	<b>US\$ 19 m</b>	<b>US\$ 155 m</b>
-------------------------	-----------	------------------	------------------	-------------------

Capital Goods

**Annual Forbes Financial Magazine  
list of the top 200 Asian firms with  
sales under a billion US dollars**

**Forbes**  
com

**Best** Under  
**A**  
**Billion**



**Colombo Dockyard PLC**

...an Odyssey of Excellence.

Frontiers of Sri Lankan Industrialization...



***Thank You***



**Colombo Dockyard PLC**

*“...an Odyssey of Excellence.”*

